

**MSI**

# Pipe Protection Technologies



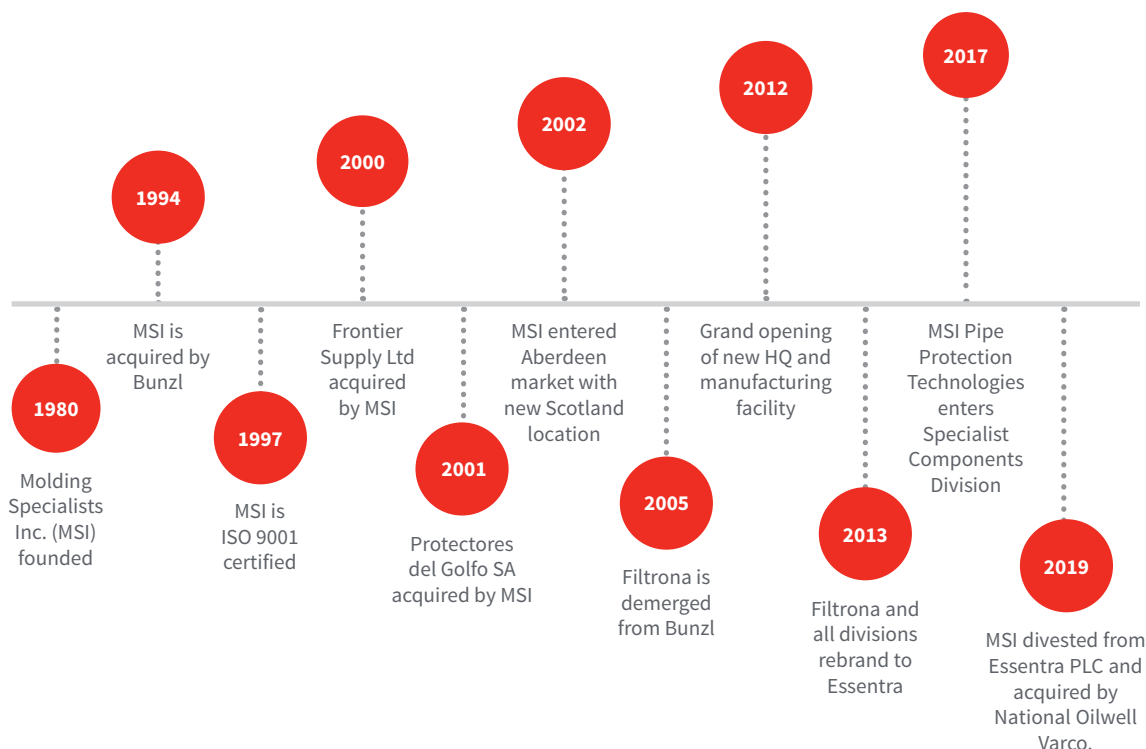
**Tuboscope | NOV** Wellbore Technologies

# Who is MSI Pipe Protection Technologies?

Since 1980, MSI Pipe Protection Technologies has built a business based on relationships. We value getting to know our customers and what they hold important, and we believe it makes us better. A diverse company in every sense of the word, we identify with you because we are you. From all walks of life, we come together with one objective: Helping you deliver protected pipe; all day, every day.

At MSI, we believe that providing the best products and customer service in the OCTG market isn't who we are, it's what we do. We combine decades of knowledge in the oil and gas industry with generations of experience in plastic manufacturing, all while providing you with expert service. Our global coverage also means that no matter where you are, we've got you covered.

Whatever you do, we want you to be the best. Let us help you deliver.





# Contents

Tector™ .....	4 – 10
Tector Plus™ .....	11 – 12
Titan™ .....	13 – 14
Magnum™ .....	15 – 16
MaxX™ .....	16 – 19
Mega™ .....	20 – 21
Quick-LOC™ .....	22
Guardian™ .....	23 – 33
Custom Thread Protectors .....	34
Ultra™ .....	34 – 35
SealTite™ .....	36
Sucker Rod Protectors .....	36
LinePro™ .....	37
BOSS Lift™ .....	38
Roughneck™ .....	39 – 43
Accessories .....	44 – 45
Rhino™ Tubular Handling Systems .....	46

Tector Upset Tubing – Closed End

**Specifications**

- **Material:** HDPE
- **Color:** Black

**Features**

- Available in liftable and non-liftable designs
- Light weight plastic
- Used to protect EUE thread forms against dirt, moisture, and corrosion
- Recommended for short term storage and in-yard transportation only
- 100% recyclable



Item No.	Connection Size	Connection	Physical Attributes	Additional Item Attributes	Pin/Box	Package Type	Package Qty.
10191	¾	EUE 8 RD	CENLV	-	Pin	CTN	400
10189	1	EUE 8 RD	CENLV	-	Pin	CTN	500
10198	1 ¼	EUE 8 RD	CENLV	-	Pin	CTN	300
10194	1 ½	EUE 10 RD	CENLV	-	Pin	CTN	600
10210	2 ¾	EUE 8 RD	CENLNV	-	Pin	CTN	250
10112	2 ¾	EUE 8 RD	CENLV	LS	Pin	CTN	190
10209	2 ¾	EUE 8 RD	CENLV	-	Pin	CTN	250
10223	2 7/8	EUE 8 RD	CENLNV	-	Pin	CTN	180
10111	2 7/8	EUE 8 RD	CENLV	LS	Pin	CTN	120
10222	2 7/8	EUE 8 RD	CENLV	-	Pin	CTN	180
10109	3 ½	EUE 8 RD	CENLV	LS	Pin	CTN	150
10234	3 ½	EUE 8 RD	CENLV	-	Pin	CTN	100
10107	4	EUE 8 RD	CENLV	LS	Pin	CTN	100
10113	4 ½	EUE 8 RD	CENLV	LS	Pin	CTN	80
10190	¾	EUE 8 RD	CELV	-	Box	CTN	400
10188	1	EUE 8 RD	CELV	-	Box	CTN	500
10197	1 ¼	EUE 8 RD	CELV	-	Box	CTN	400
10193	1 ½	EUE 10 RD	CELVN	-	Box	CTN	700
10204	2 ¾	EUE 8 RD	CELV	-	Box	CTN	250
10216	2 7/8	EUE 8 RD	CELV	-	Box	CTN	200
10230	3 ½	EUE 8 RD	CELV	-	Box	CTN	100
10116	4	EUE 8 RD	CELVN	-	Box	CTN	160
10115	4 ½	EUE 8 RD	CELVN	-	Box	CTN	85

**Tector Upset Tubing – Open End**

**Specifications**

- **Material:** HDPE
- **Color:** Black

**Features**

- Light weight plastic
- Used to protect EUE thread forms against dirt, moisture, and corrosion
- Recommended for short term storage and in-yard transportation only
- 100% recyclable



Item No.	Connection Size	Connection	Physical Attributes	Pin/Box	Package Type	Package Qty.
10212	2 3/8	EUE 8 RD	OE	Pin	CTN	250
10225	2 7/8	EUE 8 RD	OE	Pin	CTN	180
10237	3 1/2	EUE 8 RD	OE	Pin	CTN	100
10206	2 3/8	EUE 8 RD	OE	Box	CTN	250
10218	2 7/8	EUE 8 RD	OE	Box	CTN	200
10232	3 1/2	EUE 8 RD	OE	Box	CTN	100

**Tector Non-Upset Tubing – Closed End**

**Specifications**

- **Material:** HDPE
- **Color:** Black

**Features**

- Available in liftable and non-liftable designs
- Light weight plastic
- Used to protect NUE thread forms against dirt, moisture, and corrosion
- Recommended for short term storage and in-yard transportation only
- 100% recyclable



Item No.	Connection Size	Connection	Physical Attributes	Pin/Box	Package Type	Package Qty.
10191	1	NUE 10 RD	CENLV	Pin	CTN	400
10196	1 1/2	NUE 10 RD	CENLV	Pin	CTN	200
10119	1 1/2	NUE 10 RD	CENLV	Pin	CTN	200
10200	1 1/4	NUE 10 RD	CENLV	Pin	CTN	800
10121	2 3/8	NUE 10 RD	CENLV	Pin	CTN	360
10123	2 7/8	NUE 10 RD	CENLV	Pin	CTN	200

Continued on page 6

## Tector

### Tector Non-Upset Tubing – Closed End *(continued)*

Item No.	Connection Size	Connection	Physical Attributes	Pin/Box	Package Type	Package Qty.
10127	3 ½	NUE 10 RD	CENLV	Pin	CTN	115
10131	4	NUE 8 RD	CENLV	Pin	CTN	95
10141	4 ½	NUE 8 RD	CENLV	Pin	CTN	72
10190	1	NUE 10 RD	CELV	Box	CTN	400
10195	1 ½	NUE 10 RD	CELV	Box	CTN	200
10120	1 ½	NUE 10 RD	CELV	Box	CTN	200
10199	1 ¼	NUE 10 RD	CELV	Box	CTN	800
10122	2 ¾	NUE 10 RD	CELV	Box	CTN	360
10125	2 7/8	NUE 10 RD	CELV	Box	CTN	200
10129	3 ½	NUE 10 RD	CELV	Box	CTN	115
10132	4	NUE 8 RD	CELV	Box	CTN	95
10142	4 ½	NUE 8 RD	CELV	Box	CTN	72

### Tector Non-Upset Tubing – Open End

#### Specifications

- Material: HDPE
- Color: Black

#### Features

- Light weight plastic
- Used to protect NUE thread forms against dirt, moisture, and corrosion
- Recommended for short term storage and in-yard transportation only
- 100% recyclable



Item No.	Connection Size	Connection	Physical Attributes	Pin/Box	Package Type	Package Qty.
10124	2 7/8	NUE 10 RD	OE	PIN	CTN	270
10128	3 ½	NUE 10 RD	OE	PIN	CTN	160
10126	2 7/8	NUE 10 RD	OE	BOX	CTN	200
10130	3 ½	NUE 10 RD	OE	BOX	CTN	128

Tector Casing – Closed End



**Specifications**

- **Material:** HDPE
- **Color:** Black

**Features**

- Available in liftable and non-liftable designs
- Light weight plastic
- Used to protect API casing thread forms against dirt, moisture, and corrosion
- Recommended for short term storage and in-yard transportation only
- 100% recyclable

Item No.	Connection Size	Connection	Physical Attributes	Additional Item Attributes	Pin/Box	Package Type	Package Qty.
10164	4 ½	LTC	CENLV	-	Pin	PLT	800
10117	5 ½	LTC	CENLV	Ls	Pin	PLT	576
10150	5 ½	LTC	CENLV	-	Pin	PLT	392
10250	7	LTC	CENLV	-	Pin	PLT	240
10377	8 ⅝	LTC	CENLV	-	Pin	PLT	120
10265	9 ⅝	LTC	CENLV	-	Pin	PLT	96
10158	4 ½	STC	CENLV	2 ⅝ Thread	Pin	CTN	108
10151	5 ½	STC	CENLV	-	Pin	PLT	441
10253	7	STC	CENLV	-	Pin	PLT	270
10260	8 ⅝	STC	CENLV	-	Pin	PLT	160
10272	10 ¾	STC	CENLV	-	Pin	PLT	96
10274	11 ¾	STC	CENLV	-	Pin	PLT	63
10280	13 ⅜	STC	CENLV	-	Pin	PLT	72
10161	4 ½	STC/LTC	CELV	-	Box	PLT	800
10175	5 ½	STC/LTC	CELV	-	Box	PLT	441
10154	5	STC/LTC	CELV	-	Box	CTN	112
10247	7	STC/LTC	CELV	-	Box	PLT	300
10257	8 ⅝	STC/LTC	CELV	-	Box	PLT	180
10262	9 ⅝	STC/LTC	CELV	-	Box	PLT	144
10270	10 ¾	STC	CELV	-	Box	PLT	108
10427	11 ¾	STC	CELV	-	Box	PLT	72
10171	13 ⅜	STC	CELV	-	Box	PLT	72
10419	5 ½	BTC	CENLV	-	Pin	PLT	343
10287	7	BTC	CENLV	-	Pin	PLT	210

Continued on page 8

Tector Casing – Closed End (*continued*)

Item No.	Connection Size	Connection	Physical Attributes	Additional Item Attributes	Pin/Box	Package Type	Package Qty.
10264	9 5/8	BTC	CENLV	-	Pin	PLT	96
10278	13 3/8	BTC	CENLV	-	Pin	PLT	56
10182	5 1/2	BTC	CELNV	-	Box	PLT	490
10187	6 5/8	BTC	CELNV	-	Box	PLT	350
10418	7 5/8	BTC	CELV	-	Box	PLT	175
10184	7	BTC	CELV	-	Box	PLT	210
10294	9 5/8	BTC	CELNV	-	Box	PLT	96
10420	9 5/8	BTC	CELV	-	Box	PLT	96
10296	13 3/8	BTC	CELNV	-	Box	PLT	54

Tector Casing – Open End

**Specifications**

- Material: HDPE
- Color: Black

**Features**

- Light weight plastic
- Used to protect API casing thread forms against dirt, moisture, and corrosion
- Recommended for short term storage and in-yard transportation only
- 100% recyclable



Item No.	Connection Size	Connection	Physical Attributes	Additional Item Attributes	Pin/Box	Package Type	Package Qty.
10162	4 1/2	LTC	OE	-	Pin	CTN	126
10153	5	LTC	OE	-	Pin	CTN	70
10167	5 1/2	LTC	OE	-	Pin	CTN	72
10251	7	LTC	OE	-	Pin	PLT	240
10170	7 5/8	LTC	OE	-	Pin	PLT	150
10157	4 1/2	STC	OE	2 5/8 Thread	Pin	CTN	126
10156	4 1/2	STC	OE	2 Thread	Pin	CTN	180
10165	5 1/2	STC	OE	-	Pin	CTN	72
10254	7	STC	OE	-	Pin	PLT	300
10261	8 5/8	STC	OE	-	Pin	PLT	180

Continued on page 9



Tector Casing – Open End (*continued*)

Item No.	Connection Size	Connection	Physical Attributes	Additional Item Attributes	Pin/Box	Package Type	Package Qty.
10159	4 ½	STC/LTC	OE	-	Box	CTN	126
10155	5	STC/LTC	OE	-	Box	CTN	112
10166	5 ½	STC/LTC	OE	-	Box	CTN	84
10169	7 ¾	STC/LTC	OE	-	Box	PLT	275
10248	7	STC/LTC	OE	-	Box	PLT	300
10258	8 ¾	STC/LTC	OE	-	Box	PLT	180
10285	5 ½	BTC	OE	-	Pin	CTN	60
10289	7 ¾	BTC	OE	-	Pin	PLT	150
10288	7	BTC	OE	-	Pin	PLT	210
10293	9 ¾	BTC	OE	-	Pin	PLT	96
10295	10 ¾	BTC	OE	-	Pin	PLT	84
10183	5 ½	BTC	OE	-	Box	PLT	539
10186	7 ¾	BTC	OE	-	Box	PLT	175
10185	7	BTC	OE	-	Box	PLT	210
10298	10 ¾	BTC	OE	-	Box	PLT	72



Find exactly what you need — Contact us today for FREE samples!

Tector Premium Tubing Protectors, Light Duty – Closed End

**Specifications**

- **Material:** HDPE
- **Color:** Black

**Features**

- Compatible with common premium tubing connections such as CS, PH6, RTS-6/8, and TS-HD/HP
- Light weight plastic
- Protects thread forms against dirt, moisture, and corrosion
- Provides complete coverage of threaded area
- Recommended for short term storage and in-yard transportation only
- 100% recyclable

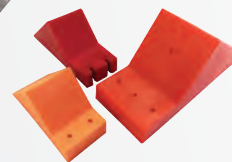


Item No.	Connection Size	Connection	Physical Attributes	Pin/Box	Package Type	Package Qty.
10143	2 3/8	6 Pitch	CENLV	Pin	CTN	70
10145	2 7/8	6 Pitch	CENLV	Pin	CTN	130
10147	3 1/2	6 Pitch	CENLV	Pin	CTN	75
10144	2 3/8	6 Pitch	CELVN	Box	CTN	280
10146	2 7/8	6 Pitch	CELVN	Box	CTN	82
10148	3 1/2	6 Pitch	CELVN	Box	CTN	200
10133	1	8 Pitch	CENLVN	Pin	CTN	288
10135	1 1/4	8 Pitch	CENLV	Pin	CTN	240
10137	1 1/2	8 Pitch	CENLV	Pin	CTN	200
10139	2 3/8	8 Pitch	CENLV	Pin	CTN	275
10134	1	8 Pitch	CELVN	Box	CTN	1176
10136	1 1/4	8 Pitch	CELVN	Box	CTN	650
10138	1 1/2	8 Pitch	CELVN	Box	CTN	500
10140	2 3/8	8 Pitch	CELVN	Box	CTN	275

# Pipe Chocks

Help secure pipe during transit.

Page 44



## Tector Plus

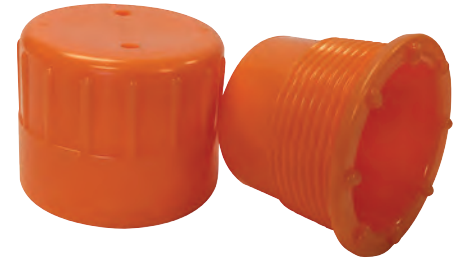
### Tector Plus Upset Tubing – Closed End

#### Specifications

- **Material:** HDPE
- **Color:** Orange

#### Features

- Available in non-liftable designs only
- Light weight plastic
- Used to protect EUE thread forms against dirt, moisture and corrosion
- Recommended for short term storage and in-yard transportation only
- 100% recyclable



Item No.	Connection Size	Connection	Physical Attributes	Pin/Box	Color	Package Type	Package Qty.
15302	2 3/8	EUE 8 RD	CENLV	Pin	Orange	CTN	330
15308	2 7/8	EUE 8 RD	CENLV	Pin	Orange	CTN	300
15314	3 1/2	EUE 8 RD	CENLV	Pin	Orange	CTN	220
15300	2 3/8	EUE 8 RD	CENLV	Box	Orange	CTN	330
15306	2 7/8	EUE 8 RD	CENLV	Box	Orange	CTN	300
15312	3 1/2	EUE 8 RD	CENLV	Box	Orange	CTN	220

### Tector Plus Upset Tubing – Open End

#### Specifications

- **Material:** HDPE
- **Color:** Orange

#### Features

- Light weight plastic
- Used to protect common EUE thread forms against dirt, moisture and corrosion
- Recommended for short term storage and in-yard transportation only
- 100% recyclable



Item No.	Connection Size	Connection	Physical Attributes	Pin/Box	Color	Package Type	Package Qty.
15304	2 3/8	EUE 8 RD	OE	Pin	Orange	CTN	330
15310	2 7/8	EUE 8 RD	OE	Pin	Orange	CTN	300
15316	3 1/2	EUE 8 RD	OE	Pin	Orange	CTN	220

## Tector Plus

### Tector Plus Casing – Closed End

#### Specifications

- **Material:** HDPE
- **Color:** Orange

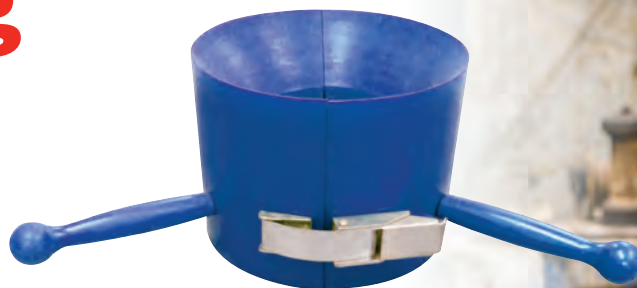
#### Features

- Available in non-liftable designs only
- Light weight plastic
- Used to protect API thread forms against dirt, moisture and corrosion
- Recommended for short term storage and in-yard transportation only
- 100% recyclable



Item No.	Connection Size	Connection	Physical Attributes	Pin/Box	Color	Package Type	Package Qty.
15320	4 ½	STC/LTC	CENLV	Pin	Orange	CTN	100
15328	5 ½	STC/LTC	CENLV	Pin	Orange	CTN	60
15332	7	STC/LTC	CENLV	Pin	Orange	CTN	30
15336	8 ⅝	LTC	CENLV	Pin	Orange	CTN	24
15338	8 ⅝	STC	CENLV	Pin	Orange	CTN	24
15343	9 ⅝	STC/LTC	CENLV	Pin	Orange	CTN	12
15318	4 ½	STC/LTC	CENLV	Box	Orange	CTN	150
15325	5 ½	STC/LTC	CENLV	Box	Orange	CTN	100
15330	7	STC/LTC	CENLV	Box	Orange	CTN	50
15334	8 ⅝	STC/LTC	CENLV	Box	Orange	CTN	30
15340	9 ⅝	STC/LTC	CENLV	Box	Orange	CTN	24

## Roughneck Stabbing Guides



Prevents damage to pipe threads during make-up

- Standard & Heavy Duty Applications
- Custom Colors Available
- Buckle, Bolt & Magnetic Closure Options
- Pages 39 - 43

# Titan

## Titan Upset Tubing – Closed End

### Specifications

- **Material:** HDPE
- **Color:** Black

### Features

- Available in liftable and non-liftable designs
- Heavy duty plastic
- Used to protect EUE thread forms against dirt, moisture, corrosion, and impact
- Recommended for long-term storage and domestic flatbed transportation only
- 100% recyclable



Item No.	Connection Size	Connection	Physical Attributes	Pin/Box	Package Type	Package Qty.
20547	2 ¾	EUE 8RD	CENLV	Pin	CTN	1560
20549	2 7/8	EUE 8RD	CENLV	Pin	CTN	1188
22164	3 ½	EUE 8RD	CENLV	Pin	CTN	720
20548	2 ¾	EUE 8RD	CENLV	Box	CTN	1560
20550	2 7/8	EUE 8RD	CENLV	Box	CTN	1188
22165	3 ½	EUE 8RD	CELV	Box	CTN	720

## Titan Casing – Closed End

### Specifications

- **Material:** HDPE
- **Color:** Black

### Features

- Available in liftable and non-liftable designs
- Heavy duty plastic
- Used to protect LTC, STC, and BTC thread forms against dirt, moisture, corrosion, and impact
- Offers maximum corrosion protection
- Recommended for long-term storage and domestic flatbed transportation only
- 100% recyclable



Item No.	Connection Size	Connection	Physical Attributes	Pin/Box	Package Type	Package Qty.
22199	4 ½	LTC	CELV	PIN	CTN	378
22233	5 ½	LTC	CELV	PIN	CTN	216
22282	7	LTC	CELV	PIN	CTN	120
22311	7 5/8	LTC	CENLV	PIN	CTN	120

Continued on page 14

Titan Casing – Closed End *(continued)*

Item No.	Connection Size	Connection	Physical Attributes	Pin/Box	Package Type	Package Qty.
22331	8 5/8	LTC	CENLV	Pin	CTN	84
22361	9 5/8	LTC	CELV	Pin	CTN	72
20489	9 5/8	LTC	CELV	Pin	CTN	72
22283	7	STC	CENLV	Pin	CTN	120
22333	8 5/8	STC	CENLV	Pin	CTN	84
22363	9 5/8	STC	CELV	Pin	CTN	72
20551	4 1/2	STC/LTC	CELV	Box	CTN	392
22231	5 1/2	STC/LTC	CELV	Box	CTN	216
22285	7	STC/LTC	CELV	Box	CTN	120
22312	7 5/8	STC/LTC	CELV	Box	CTN	120
22335	8 5/8	STC/LTC	CELV	Box	CTN	84
22364	9 5/8	STC/LTC	CELV	Box	CTN	72
22191	4 1/2	BTC	CENLV	Pin	CTN	448
22237	5 1/2	BTC	CENLV	Pin	CTN	343
22286	7	BTC	CELV	Pin	CTN	120
22337	8 5/8	BTC	CENLV	Pin	CTN	84
22365	9 5/8	BTC	CELV	Pin	CTN	60
20487	9 5/8	BTC	CELV	Pin	CTN	60
22192	4 1/2	BTC	CELV	Box	CTN	448
22238	5 1/2	BTC	CELV	Box	CTN	200
22287	7	BTC	CELV	Box	CTN	120
22338	8 5/8	BTC	CELV	Box	CTN	84
22366	9 5/8	BTC	CELV	Box	CTN	60

**Tuboscope | NOV** Wellbore Technologies

**Your trusted oilfield service provider**

Improve performance • Validate asset integrity • Extend service life  
Drilling • Production • Artificial Lift • Line Pipe

346-223-6100

tuboscope@nov.com

nov.com/tuboscope

## Magnum Casing – Closed End

### Specifications

- **Material:** HDPE
- **Color:** Black

### Features

- Available in recessed liftable and non-liftable designs
- Recommended for long-term storage and rugged flatbed transportation
- Used to protect LTC, STC, and BTC thread connections against dirt, moisture, corrosion, and impact
- Extra heavy duty plastic for maximum thread protection
- Reduced freight expenses for extra heavy duty protection over composite style
- 100% recyclable



Item No.	Connection Size	Connection	Physical Attributes	Pin/Box	Package Type	Package Qty.
25513	5 ½	LTC	CENLV	Pin	PLT	210
25514	7	LTC	CENLV	Pin	PLT	100
25515	7	LTC	CELV	Pin	PLT	100
25516	7 ⅝	LTC	CELV	Pin	PLT	80
25517	8 ⅝	LTC	CENLV	Pin	PLT	60
25518	9 ⅝	LTC	CELV	Pin	PLT	44
25519	8 ⅝	STC	CELV	Pin	PLT	70
25520	9 ⅝	STC	CELV	Pin	PLT	44
25505	10 ¾	STC	CELV	Pin	PLT	45
25521	11 ¾	STC	CELV	Pin	PLT	40
25522	13 ¾	STC	CELV	Pin	PLT	25
25523	4 ½	STC/LTC	CELV	Box	PLT	504
25524	5 ½	STC/LTC	CELV	Box	PLT	294
25525	7	STC/LTC	CELV	Box	PLT	100
25526	7 ⅝	STC/LTC	CELV	Box	PLT	80
25527	8 ⅝	STC/LTC	CELV	Box	PLT	60
25528	9 ⅝	STC/LTC	CELV	Box	PLT	44
25506	10 ¾	STC	CELV	Box	PLT	45
25529	11 ¾	STC	CELV	Box	PLT	48
25530	13 ¾	STC	CELV	Box	PLT	25
25531	4 ½	BTC	CENLV	Pin	PLT	294
25532	5 ½	BTC	CENLV	Pin	PLT	180
25503	7 ⅝	BTC	CELV	Pin	PLT	80
25533	7	BTC	CELV	Pin	PLT	100
25534	8 ⅝	BTC	CENLV	Pin	PLT	60

Continued on page 16

## MaxX

### Magnum Casing – Closed End (*continued*)

Item No.	Connection Size	Connection	Physical Attributes	Pin/Box	Package Type	Package Qty.
25535	9 5/8	BTC	CELV	Pin	PLT	60
25484	10 3/4	BTC	CELV	Pin	PLT	45
25536	11 3/4	BTC	CELV	Pin	PLT	40
25486	13 3/8	BTC	CELV	Pin	PLT	25
25537	4 1/2	BTC	CELV	Box	PLT	441
25538	5 1/2	BTC	CELV	Box	PLT	294
25539	7	BTC	CELV	Box	PLT	210
25504	7 5/8	BTC	CELV	Box	PLT	80
25540	8 5/8	BTC	CELV	Box	PLT	60
25541	9 5/8	BTC	CELV	Box	PLT	60
25485	10 3/4	BTC	CELV	Box	PLT	45
25542	11 3/4	BTC	CELV	Box	PLT	40
25487	13 3/8	BTC	CELV	Box	PLT	25

### MaxX Tubing, API, Extra Heavy Duty – Closed End

#### Specifications

- Material: HDPE
- Color: Black

#### Features

- API 5CT, Annex I, 10th edition compliant
- Advanced plastic formulation designed for durability and impact resistance
- Increased pad height and thickness for added durability
- Pin design is non-liftable; box design is liftable
- Installation/removal feature in pad design
- Designed for extreme weather conditions; tested from -50°F to 150°F
- Available in EUE thread connections only
- Fully Plastic
- 100% Recyclable



Item No.	Connection Size	Connection	Physical Attributes	Pin/Box	Package Type	Package Qty.
27247	2 3/8	EUE 8 RD	CENLV	Pin	PLT	1080
27248	2 7/8	EUE 8 RD	CENLV	Pin	PLT	900
27249	3 1/2	EUE 8 RD	CENLV	Pin	PLT	810
26101	2 3/8	EUE 8 RD	CELV	Box	PLT	1080
26103	2 7/8	EUE 8 RD	CELV	Box	PLT	1690
26105	3 1/2	EUE 8 RD	CELV	Box	PLT	891



## MaxX Lifiable Casing, API, Extra Heavy Duty – Closed End

### Specifications

- **Material:** HDPE
- **Color:** Black

### Features

- API 5CT, Annex I, 10th edition compliant
- Advanced plastic formulation designed for durability and impact resistance
- Increased pad height and thickness for added durability
- Closed end, recessed
- Installation/removal feature in pad design
- Designed for extreme weather conditions; tested from -50°F to 150°F
- Available in API thread connections only
- Fully Plastic
- 100% Recyclable



Item No.	Connection Size	Connection	Physical Attributes	Pin/Box	Package Type	Package Qty.
26381	4 ½	LTC	CELV	Pin	PLT	378
26382	5 ½	LTC	CELV	Pin	PLT	252
26123	7	LTC	CELV	Pin	PLT	125
26130	7 ⅝	LTC	CELV	Pin	PLT	80
26218	8 ⅝	LTC	CELV	Pin	PLT	80
26115	9 ⅝	LTC	CELV	Pin	PLT	44
26134	8 ⅝	STC	CELV	Pin	PLT	70
26114	9 ⅝	STC	CELV	Pin	PLT	44
26119	10 ¾	STC	CELV	Pin	PLT	45
26153	11 ¾	STC	CELV	Pin	PLT	40
26138	13 ¾	STC	CELV	Pin	PLT	25
26109	4 ½	STC/LTC	CELV	Box	PLT	384
26113	5 ½	STC/LTC	CELV	Box	PLT	294
26125	7	STC/LTC	CELV	Box	PLT	125
26131	7 ⅝	STC/LTC	CELV	Box	PLT	80
26135	8 ⅝	STC	CELV	Box	PLT	60
26386	8 ⅝	LTC	CELV	Box	PLT	80
26387	9 ⅝	LTC	CELV	Box	PLT	80
26120	10 ¾	STC	CELV	Box	PLT	45
26154	11 ¾	STC	CELV	Box	PLT	45
26139	13 ¾	STC	CELV	Box	PLT	25

Continued on page 18

MaxX Lifiable Casing, API, Extra Heavy Duty – Closed End *(continued)*

Item No.	Connection Size	Connection	Physical Attributes	Pin/Box	Package Type	Package Qty.
26380	4 ½	BTC	CELV	Pin	PLT	384
26377	5 ½	BTC	CELV	Pin	PLT	252
26126	7	BTC	CELV	Pin	PLT	125
26128	7 ⅝	BTC	CELV	Pin	PLT	80
26132	8 ⅝	BTC	CELV	Pin	PLT	60
26116	9 ⅝	BTC	CELV	Pin	PLT	125
26121	10 ¾	BTC	CELV	Pin	PLT	45
26151	11 ¾	BTC	CELV	Pin	PLT	40
26136	13 ⅜	BTC	CELV	Pin	PLT	25
26216	4 ½	BTC	CELV	Box	PLT	384
26150	5 ½	BTC	CELV	Box	PLT	294
26127	7	BTC	CELV	Box	PLT	125
26129	7 ⅝	BTC	CELV	Box	PLT	80
26133	8 ⅝	BTC	CELV	Box	PLT	60
26184	9 ⅝	BTC	CELV	Box	PLT	64
26122	10 ¾	BTC	CELV	Box	PLT	60
26152	11 ¾	BTC	CELV	Box	PLT	40
26137	13 ⅜	BTC	CELV	Box	PLT	25

Need to meet  
**API 5CT,**  
**ANNEX I,**  
**10<sup>TH</sup> ED.**  
 with a different style  
 of protector?

Check out our Ultra and Mega lines for additional fully API compliant options.



## MaxX Non-Liftable Casing, API, Extra Heavy Duty – Closed End

### Specifications

- **Material:** HDPE
- **Color:** Black

### Features

- API 5CT, Annex I, 10th edition compliant
- Advanced plastic formulation designed for durability and impact resistance
- Ribs strategically placed to keep the diaphragm stable
- Diaphragm and pads designed to absorb and disperse energy from an impact
- Spanner holes allow the operator to safely install and remove boxes or pins using limited installation tools
- Auxiliary installation/removal feature is designed to be used with commonly found tools on a rig site
- Designed for extreme weather conditions; tested from -50°F to 150°F
- Fully Plastic
- Available in API thread connections only
- 100% Recyclable



Item No.	Connection Size	Connection	Physical Attributes	Pin/Box	Package Type	Package Qty.
27245	4 ½	LTC	CENLV	PIN	PLT	448
27253	5 ½	LTC	CENLV	PIN	PLT	252
27256	7	LTC	CENLV	PIN	PLT	150
27259	9 ⅝	LTC	CENLV	PIN	PLT	80
27251	4 ½	STC	CENLV	PIN	PLT	448
27254	5 ½	STC	CENLV	PIN	PLT	252
27258	7	STC	CENLV	PIN	PLT	150
27261	9 ⅝	STC	CENLV	PIN	PLT	80
27255	5 ½	STC/LTC	CENLV	BOX	PLT	294
27257	7	STC/LTC	CENLV	BOX	PLT	180
27262	9 ⅝	STC	CENLV	BOX	PLT	80
27260	9 ⅝	LTC	CENLV	BOX	PLT	80
27252	4 ½	BTC	CENLV	PIN	PLT	384
27243	5 ½	BTC	CENLV	PIN	PLT	252
27266	7	BTC	CENLV	PIN	PLT	150
27264	9 ⅝	BTC	CENLV	PIN	PLT	80
27263	4 ½	BTC	CENLV	BOX	PLT	441
27244	5 ½	BTC	CENLV	BOX	PLT	252
27267	7	BTC	CENLV	BOX	PLT	150
27265	9 ⅝	BTC	CENLV	BOX	PLT	80

## Mega Casing, API – Closed End

### Specifications

- **Material:** HDPE/Steel
- **Color:** Refer to Chart

### Features

- API 5CT, Annex I, 10th edition compliant
- Available in liftable and non-liftable designs
- Heavy duty plastic threads for maximum corrosion protection
- Steel shell to ensure maximum impact protection
- Recommended for long-term storage and extreme transportation
- Designed for extreme weather conditions; tested from -50°F to 150°F
- CNC cut for a precision fit
- Also available in premium thread connections
- 100% recyclable



Item No.	Connection Size	Connection	Physical Attributes	Pin/Box	Color	Package Type	Package Qty.
90177	7	LTC	CENLV	PIN	Green	PLT	125
90175	9 5/8	LTC	CELV	PIN	Green	PLT	64
90178	7	LTC	CENLV	BOX	Green	PLT	125
90111	8 5/8	LTC	CELV	BOX	Black	PLT	120
90176	9 5/8	LTC	CELV	BOX	Green	PLT	64
90149	8 5/8	STC	CENLV	PIN	Green	PLT	80
90164	13 3/8	STC	CENLV	PIN	Green	PLT	36
90146	16	STC	CELV	PIN	Dark Orange	PLT	20
90159	18 5/8	STC	CELV	PIN	Black	PLT	16
90127	20	STC	CELV	PIN	Black	PLT	20
90150	8 5/8	STC	CENLV	BOX	Green	PLT	80
90165	13 3/8	STC	CENLV	BOX	Green	PLT	36
90147	16	STC	CELV	BOX	Dark Orange	PLT	25
90160	18 5/8	STC	CELV	BOX	Black	PLT	16
90126	20	STC	CELV	BOX	Black	PLT	20
90114	8 5/8	BTC	CELV	PIN	Black	PLT	80
90161	9 5/8	BTC	CELV	PIN	Green	PLT	80
90119	9 5/8	BTC	CELV	PIN	Black	PLT	80
90121	10 3/4	BTC	CELV	PIN	Black	PLT	84
90140	13 3/8	BTC	CELV	PIN	Green	PLT	45
90134	16	BTC	CELV	PIN	Green	PLT	20

Continued on page 21

Mega Casing, API – Closed End *(continued)*

Item No.	Connection Size	Connection	Physical Attributes	Pin/Box	Color	Package Type	Package Qty.
90130	16	BTC	CELV	Pin	Black	PLT	20
90105	18 5/8	BTC	CELV	Pin	Black	PLT	16
90109	20	BTC	CELV	Pin	Black	PLT	20
90113	8 5/8	BTC	CELV	Box	Black	PLT	80
90162	9 5/8	BTC	CELV	Box	Green	PLT	80
90118	9 5/8	BTC	CELV	Box	Black	PLT	80
90120	10 3/4	BTC	CELV	Box	Black	PLT	60
90122	11 3/4	BTC	CELV	Box	Black	PLT	36
90141	13 3/8	BTC	CELVN	Box	Green	PLT	45
90172	13 3/8	BTC	CELV	Box	Green	PLT	45
90135	16	BTC	CELVN	Box	Green	PLT	20
90131	16	BTC	CELV	Box	Black	PLT	20
90104	18 5/8	BTC	CELV	Box	Black	PLT	20
90108	20	BTC	CELV	Box	Black	PLT	20

# Make Installation Easier

Contact us for your customized installation tool needs



## Quick-LOC Tubing and Casing, Open End

### Specifications

- **Material:** Polyurethane, steel components
- **Color:** Red

### Features

- Adjusting latch for easy application and removal
- Includes adjustment tool for latch
- Durable, heavy-duty plastic
- Long shelf life
- Non-threaded
- Used to protect external threads
- Recommended for transferring pipe from rack to rig floor



Item No.	Item Size	Pin/Box	Item Weight
81532	2 3/8	Pin	8
81533	2 7/8	Pin	8
81534	3 1/2	Pin	8
81535	4	Pin	13
81536	4 1/2	Pin	12
81537	5	Pin	15
81538	5 1/2	Pin	14
81539	6 5/8	Pin	15
81491	7	Pin	17
81540	7 5/8	Pin	17
81541	8 5/8	Pin	19
81492	9 5/8	Pin	20
81542	10 3/4	Pin	22
81543	11 3/4	Pin	25
81493	13 3/8	Pin	29
81544	16	Pin	32
81545	18	Pin	36
81546	18 5/8	Pin	38
81547	20	Pin	40
81548	22	Pin	44
81549	24	Pin	49
81550	30	Pin	61

## Guardian Drill Pipe, API, Light Duty, Closed End

### Specifications

- **Material:** HDPE
- **Color:** Black

### Features

- Light weight plastic
- Available in liftable and non-liftable designs
- Used to protect common API drill pipe thread connections against dirt, moisture, and corrosion
- Recommended for short term storage and in-yard transportation only
- 100% recyclable



Item No.	Connection Size	Connection	Physical Attributes	Pin/Box	Package Type	Package Qty.
40100	2 7/8	IF	CENLV	PIN	CTN	100
40105	2 7/8	IF	CELNV	BOX	CTN	144
40113	2 3/8	REG	CENLV	PIN	CTN	225
40121	3 1/2	REG	CENLV	PIN	CTN	100
40134	4 1/2	REG	CENLV	PIN	CTN	100
40143	6 5/8	REG	CENLV	PIN	CTN	45
40152	7 5/8	REG	CENLV	PIN	CTN	40
40540	2 3/8	REG	CELV	BOX	CTN	300
40589	2 3/8	REG	CELNV	BOX	CTN	300
40547	3 1/2	REG	CELNV	BOX	CTN	125
40136	4 1/2	REG	CELV	BOX	CTN	100
40137	4 1/2	REG	CELNV	BOX	CTN	100
40156	7 5/8	REG	CELV	BOX	CTN	36



## Guardian Drill Pipe, API, Light Duty, Open End

### Specifications

- **Material:** HDPE
- **Color:** Black

### Features

- Light weight plastic
- Used to protect common API drill pipe thread connections against dirt, moisture, and corrosion
- Provides complete coverage of threaded area
- Recommended for short term storage and in-yard transportation only
- 100% recyclable



Item No.	Connection Size	Connection	Physical Attributes	Pin/Box	Package Type	Package Qty.
40537	4	FH	OE	PIN	CTN	128
40149	6 3/8	FH	OE	PIN	CTN	48
40538	4	FH	OE	BOX	CTN	80
40151	6 3/8	FH	OE	BOX	CTN	36
40102	2 7/8	IF	OE	PIN	CTN	100
40109	3 1/2	IF	OE	PIN	CTN	100
40127	4	IF	OE	PIN	CTN	24
40131	4 1/2	IF	OE	PIN	CTN	32
40107	2 7/8	IF	OE	BOX	CTN	144
40111	3 1/2	IF	OE	BOX	CTN	140
40129	4	IF	OE	BOX	CTN	64
40133	4 1/2	IF	OE	BOX	CTN	48
40102	2 7/8	NC31	OE	PIN	CTN	100
40109	3 1/2	NC38	OE	PIN	CTN	100
40127	4	NC46	OE	PIN	CTN	24
40131	4 1/2	NC50	OE	PIN	CTN	32
40107	2 7/8	NC31	OE	BOX	CTN	144
40111	3 1/2	NC38	OE	BOX	CTN	140
40129	4	NC46	OE	BOX	CTN	64
40133	4	NC50	OE	BOX	CTN	48
40525	2 3/8	REG	OE	PIN	CTN	250
40565	3 1/2	REG	OE	PIN	CTN	115
40135	4 1/2	REG	OE	PIN	CTN	100
40141	5 1/2	REG	OE	PIN	CTN	72
40145	6 3/8	REG	OE	PIN	CTN	45
40155	7 3/8	REG	OE	PIN	CTN	40
40526	2 3/8	REG	OE	BOX	CTN	118
40536	3 1/2	REG	OE	BOX	CTN	115
40139	4 1/2	REG	OE	BOX	CTN	60
40142	5 1/2	REG	OE	BOX	CTN	48
40147	6 3/8	REG	OE	BOX	CTN	36
40158	7 3/8	REG	OE	BOX	CTN	36
40127	4 1/2	XH	OE	PIN	CTN	24
40131	5	XH	OE	PIN	CTN	32



## Guardian Drill Pipe, API, Heavy Duty, Closed End

### Specifications

- **Material:** HDPE
- **Color:** Black

### Features

- Available in recessed liftable and non-liftable designs
- Used to protect common API drill pipe thread connections against dirt, moisture, corrosion, and impact
- Recommended for long-term storage and rugged flatbed transportation
- Extra heavy duty plastic for maximum thread protection
- Reduced freight expenses for extra-heavy duty protection over composite style
- 100% recyclable



Item No.	Connection Size	Connection	Physical Attributes	Pin/Box	Package Type	Package Qty.
40523	4	FH	CENLV	PIN	PLT	576
40251	5 ½	FH	CENLV	PIN	PLT	180
40258	6 ¾	FH	CENLV	PIN	PLT	125
40524	4	FH	CELV	BOX	PLT	720
40255	5 ½	FH	CELV	BOX	PLT	245
40263	6 ¾	FH	CELV	BOX	PLT	180
41026	7 ¾	H-90 DS	CENLV	PIN	PLT	100
41027	7 ¾	H-90 DS	CENLV	BOX	PLT	100
40440	2 ¾	HT SL H-90	CENLV	BOX	PLT	1,350
40441	2 ¾	HT SL H-90	CENLV	PIN	PLT	1,014
40446	2 7/8	SL H-90	CENLV	PIN	PLT	540
40664	3 ½	SL H-90	CENLV	PIN	PLT	480
40445	2 7/8	SL H-90	CENLV	BOX	PLT	1,008
40665	3 ½	SL H-90	CELV	BOX	PLT	567
40207	2 ¾	IF	CENLV	PIN	PLT	1,560
40567	2 7/8	IF	CENLV	PIN	PLT	800
40215	3 ½	IF	CENLV	PIN	PLT	648
40231	4	IF	CENLV	PIN	PLT	252
40242	4 ½	IF	CENLV	PIN	PLT	252
40747	2 ¾	IF	CENLV	BOX	PLT	1,800
40568	2 7/8	IF	CELV	BOX	PLT	1,320
40678	2 7/8	IF	CENLV	BOX	PLT	1,320
40221	3 ½	IF	CENLV	BOX	PLT	800
40202	4	IF	CELV	BOX	PLT	512
40566	4 ½	IF	CELV	BOX	PLT	384
40731	4 ½	IF	CENLV	BOX	PLT	210
40207	2 ¾	NC26	CENLV	PIN	PLT	1,560
40567	2 7/8	NC31	CENLV	PIN	PLT	800
40215	3 ½	NC38	CENLV	PIN	PLT	648
40523	4	NC40	CENLV	PIN	PLT	576
40231	4	NC46	CENLV	PIN	PLT	252
40242	4 ½	NC50	CENLV	PIN	PLT	252
40747	2 ¾	NC26	CENLV	BOX	PLT	1,859
40568	2 7/8	NC31	CELV	BOX	PLT	1,320
40276	7 ¾	NC38	CENLV	BOX	PLT	800

## Guardian Drill Pipe, API, Heavy Duty, Closed End

### Specifications

- **Material:** HDPE
- **Color:** Black

### Features

- Available in recessed liftable and non-liftable designs
- Used to protect common API drill pipe thread connections against dirt, moisture, corrosion, and impact
- Recommended for long-term storage and rugged flatbed transportation
- Extra heavy duty plastic for maximum thread protection
- Reduced freight expenses for extra-heavy duty protection over composite style
- 100% recyclable



Item No.	Connection Size	Connection	Physical Attributes	Pin/Box	Package Type	Package Qty.
40566	4 1/2	NC50	CELV	BOX	PLT	384
40683	2 3/8	PAC	CENLV	PIN	PLT	910
40444	2 7/8	PAC	CENLV	PIN	PLT	2,028
40684	2 3/8	PAC	CENLV	BOX	PLT	1,575
40443	2 7/8	PAC	CENLV	BOX	PLT	2,250
40673	2 7/8	PAC DSI	CENLV	PIN	PLT	2,028
40674	2 7/8	PAC DSI	CENLV	BOX	PLT	2,250
40061	2 3/8	HT PAC	CENLV	PIN	PLT	1,352
40681	2 7/8	HT PAC	CENLV	PIN	PLT	1,456
40062	2 3/8	HT PAC	CENLV	BOX	PLT	1,575
40682	2 7/8	HT PAC	CENLV	BOX	PLT	1,800
40600	2 3/8	REG	CENLV	PIN	PLT	1,320
40602	2 7/8	REG	CENLV	PIN	PLT	1,092
40604	3 1/2	REG	CENLV	PIN	PLT	800
41101	4 1/2	REG	CENLV	PIN	PLT	288
40827	5 1/2	REG	CENLV	PIN	PLT	150
40267	6 3/8	REG	CENLV	PIN	PLT	100
40276	7 3/8	REG	CENLV	PIN	PLT	100
40601	2 3/8	REG	CENLV	BOX	PLT	2,250
40603	2 7/8	REG	CELV	BOX	PLT	1,274
40605	3 1/2	REG	CELV	BOX	PLT	968
40826	4 1/2	REG	CELV	BOX	PLT	384
40828	5 1/2	REG	CELV	BOX	PLT	150
40271	6 3/8	REG	CENLV	BOX	PLT	180
41047	6 3/8	REG	CELV	BOX	PLT	100
40280	7 3/8	REG	CELV	BOX	PLT	100
41048	7 3/8	REG	CENLV	BOX	PLT	125
40663	3 1/2	XH	CENLV	PIN	PLT	567
40231	4 1/2	XH	CENLV	PIN	PLT	252
40112	5	XH	CENLV	PIN	PLT	252

## Guardian Drill Pipe, API, Heavy Duty, Open End

### Specifications

- **Material:** HDPE
- **Color:** Black

### Features

- Used to protect common API drill pipe thread connections against dirt, moisture, corrosion, and impact
- Recommended for long-term storage and rugged flatbed transportation
- Extra heavy duty plastic for maximum thread protection
- Reduced freight expenses for extra-heavy duty protection over composite style
- 100% recyclable



Item No.	Connection Size	Connection	Physical Attributes	Pin/Box	Package Type	Package Qty.
40572	4	FH	OE	PIN	PLT	288
40579	6 ½	FH	OE	PIN	PLT	150
40573	4	FH	OE	BOX	PLT	378
40584	5 ½	FH	OE	BOX	PLT	343
40580	6 ½	FH	OE	BOX	PLT	230
40569	2 ¾	IF	OE	PIN	PLT	800
40521	3 ½	IF	OE	PIN	PLT	648
40574	4	IF	OE	PIN	PLT	392
40203	4 ½	IF	OE	PIN	PLT	392
40570	2 ¾	IF	OE	BOX	PLT	1320
40571	3 ½	IF	OE	BOX	PLT	384
40575	4	IF	OE	BOX	PLT	512
40576	4 ½	IF	OE	BOX	PLT	512
40569	2 ¾	NC31	OE	PIN	PLT	800
40521	3 ½	NC38	OE	PIN	PLT	648
40574	4	NC46	OE	PIN	PLT	392
40203	4 ½	NC50	OE	PIN	PLT	392
40570	2 ¾	NC31	OE	BOX	PLT	1320
40571	3 ½	NC38	OE	BOX	PLT	384
40575	4	NC46	OE	BOX	PLT	512
40576	4 ½	NC50	OE	BOX	PLT	512
40448	3 ½	REG	OE	PIN	PLT	560
40611	4 ½	REG	OE	PIN	PLT	288
40447	3 ½	REG	OE	BOX	PLT	700
40578	6 ½	REG	OE	BOX	PLT	180
40582	7 ½	REG	OE	BOX	PLT	100
40574	4 ½	XH	OE	PIN	PLT	392
40203	5	XH	OE	PIN	PLT	392

## Guardian Drill Pipe, Premium, Heavy Duty, Closed End

### Specifications

- **Material:** HDPE
- **Color:** Refer to Chart

### Features

- Available in recessed liftable and non-liftable designs
- Used to protect common premium drill pipe thread connections against dirt, moisture, corrosion, and impact
- Recommended for long-term storage and rugged flatbed transportation
- Extra heavy duty plastic for maximum thread protection
- Reduced freight expenses for extra-heavy duty protection over composite style
- 100% recyclable



Item No.	Item Size	Connection	Attributes	Pin/Box	Color	Package Type	Package Qty.
40990	2.875	CTM26	CENLV	PIN	BLACK	PLT	864
40044	4	CTM39	CELV	PIN	BLACK	PLT	320
40451	4.5	CTM43	CENLV	PIN	BLACK	PLT	576
40453	5.875	CTM57	CENLV	PIN	BLACK	PLT	252
40991	2.875	CTM26	CENLV	BOX	BLACK	PLT	1176
40045	4	CTM39	CENLV	BOX	BLACK	PLT	405
40450	4.5	CTM43	CENLV	BOX	BLACK	PLT	576
40452	5.875	CTM57	CENLV	BOX	BLACK	PLT	343
40455	5.875	DC57	CENLV	PIN	BLACK	PLT	252
40454	5.875	DC57	CENLV	BOX	BLACK	PLT	343
41097	3 1/2	DELTA 377	CENLV	PIN	BLUE	PLT	511
41080	4 1/2	DELTA 425	CENLV	PIN	BLUE	PLT	320
41099	5 7/8	DELTA 576	CENLV	PIN	BLUE	PLT	180
41098	3 1/2	DELTA 377	CENLV	BOX	BLUE	PLT	600
41081	4 1/2	DELTA 425	CENLV	BOX	BLUE	PLT	486
41100	5 7/8	DELTA 576	CENLV	BOX	BLUE	PLT	245
40458	3.5	DS38	CENLV	PIN	BLACK	PLT	320
40459	4.5	DS40	CENLV	PIN	BLACK	PLT	320
40460	4.5	DS46	CENLV	PIN	BLACK	PLT	252
40462	5	DS50	CENLV	PIN	BLACK	PLT	180
40652	5.5	DS55	CENLV	PIN	BLACK	PLT	210
40650	6.625	DS65	CENLV	PIN	BLACK	PLT	210
40940	3.5	DS38	CENLV	BOX	BLACK	PLT	700
40654	4.5	DS40	CELV	BOX	BLACK	PLT	630
40507	4.5	DS40	CELV	BOX	BLACK	PLT	720
41058	4.5	DS46	CELV	BOX	BLACK	PLT	252
40461	5	DS50	CELV	BOX	BLACK	PLT	512
40653	5.5	DS55	CELV	BOX	BLACK	PLT	343
40651	6.625	DS65	CELV	BOX	BLACK	PLT	120
40556	6.625	GTM69	CENLV	PIN	BLACK	PLT	80
40555	6.625	GTM69	CELV	BOX	BLACK	PLT	100
40466	3.5	HT38	CENLV	PIN	BLACK	PLT	432
40468	4	HT40	CENLV	PIN	BLACK	PLT	360
40470	4.5	HT46	CENLV	PIN	BLACK	PLT	175
40472	5	HT50	CENLV	PIN	BLACK	PLT	180
40476	5.5	HT55	CENLV	PIN	BLACK	PLT	180
40465	3.5	HT38	CELV	BOX	BLACK	PLT	600
40467	4	HT40	CENLV	BOX	BLACK	PLT	360
40469	4.5	HT46	CENLV	BOX	BLACK	PLT	210
40471	5	HT50	CENLV	BOX	BLACK	PLT	245
40473	5.5	HT55	CELV	BOX	BLACK	PLT	245

## Guardian Drill Pipe, Premium, Heavy Duty, Closed End

### Specifications

- **Material:** HDPE
- **Color:** Refer to Chart

### Features

- Available in recessed liftable and non-liftable designs
- Used to protect common premium drill pipe thread connections against dirt, moisture, corrosion, and impact
- Recommended for long-term storage and rugged flatbed transportation
- Extra heavy duty plastic for maximum thread protection
- Reduced freight expenses for extra-heavy duty protection over composite style
- 100% recyclable



Item No.	Item Size	Connection	Attributes	Pin/Box	Color	Package Type	Package Qty.
40787	3.5	TT380	CENLV	PIN	BLACK	PLT	432
40793	4	TT390	CENLV	PIN	BLACK	PLT	320
40900	4	TT420	CENLV	PIN	BLACK	PLT	384
40890	4.5	TT485	CENLV	PIN	BLACK	PLT	144
41024	5	TT500	CENLV	PIN	BLACK	PLT	180
40726	5	TT525	CENLV	PIN	BLACK	PLT	252
40768	5.5	TT550	CENLV	PIN	BLACK	PLT	210
40642	5.875	TT585	CENLV	PIN	BLACK	PLT	252
41065	6.625	TT690	CENLV	PIN	BLACK	PLT	150
40788	3.5	TT380	CELV	BOX	BLACK	PLT	600
40794	4	TT390	CENLV	BOX	BLACK	PLT	405
40901	4	TT420	CENLV	BOX	BLACK	PLT	486
40891	4.5	TT485	CENLV	BOX	BLACK	PLT	343
41025	5	TT500	CENLV	BOX	BLACK	PLT	245
40727	5	TT525	CENLV	BOX	BLACK	PLT	252
40769	5.5	TT550	CENLV	BOX	BLACK	PLT	294
40643	5.875	TT585	CENLV	BOX	BLACK	PLT	252
41066	6.625	TT690	CENLV	BOX	BLACK	PLT	490
41092	5.5	TTM550	CENLV	PIN	BLACK	PLT	180
41093	5.5	TTM550	CENLV	BOX	BLACK	PLT	245
40484	3.5	XT38	CENLV	PIN	BLACK	PLT	405
40487	4	XT39	CENLV	PIN	BLACK	PLT	384
40489	4.5	XT40	CENLV	PIN	BLACK	PLT	384
40823	2.875	XT27	CENLV	BOX	BLACK	PLT	1,183
40483	3.5	XT38	CELV	BOX	BLACK	PLT	540
40485	4	XT39	CELV	BOX	BLACK	PLT	700
40488	4.5	XT40	CENLV	BOX	BLACK	PLT	405
40633	4 ½	XT46 XTM46	CENLV	PIN	BLACK	PLT	245
40491	5	XT50 XTM50	CELV	PIN	BLACK	PLT	144
40515	5 ½	XT54 XTM54	CENLV	PIN	BLACK	PLT	180
40626	5.875	XT57 XTM57	CENLNV	PIN	BLACK	PLT	180
40494	5.875	XT57 XTM57	CENLV	PIN	BLACK	PLT	180
40506	6 ⅝	XT69 XTM69	CENLV	PIN	BLACK	PLT	80
40634	4 ½	XT46 XTM46	CENLV	BOX	BLACK	PLT	336
40490	5	XT50 XTM50	CELV	BOX	BLACK	PLT	392
40514	5 ½	XT54 XTM54	CENLV	BOX	BLACK	PLT	245
40492	5.875	XT57 XTM57	CELV	BOX	BLACK	PLT	196
40627	5.875	XT57 XTM57	CENLNV	BOX	BLACK	PLT	196
40505	6 ⅝	XT69 XTM69	CENLV	BOX	BLACK	PLT	100
40498	3 ½	XTM38	CENLV	PIN	BLACK	PLT	240
40500	4	XTM39	CENLV	PIN	BLACK	PLT	384
40546	4 ½	XTM40	CENLV	PIN	BLACK	PLT	384
40515	5 ½	XTM54	CENLV	PIN	BLACK	PLT	180
40494	5 ⅞	XTM57	CENLV	PIN	BLACK	PLT	180

## Guardian Drill Pipe, API, Metal, Closed End

### Specifications

- **Material:** Pressed Steel
- **Color:** Silver/Gray

### Features

- Uncompromising, heavy-duty protection of the entire thread form
- Provides protection even in the most extreme weather conditions
- Extra-heavy, steel construction
- Thread form and size permanently stamped on the part
- Easy installation and removal
- CNC precision cut thread
- Available in common API connections



Item No.	Item Size	Connection	Attributes	Pin/Box	Package Type	Package Qty.
40351	4	FH	CENLV	PIN	PLT	392
40363	5 ½	FH	CENLV	PIN	PLT	210
40368	6 ¾	FH	CENLV	PIN	PLT	120
40350	4	FH	CELV	BOX	PLT	560
40362	5 ½	FH	CELV	BOX	PLT	350
40367	6 ¾	FH	CELV	BOX	PLT	200
40353	4	H90	CENLV	PIN	PLT	294
40554	5	H90	CENLV	PIN	PLT	210
40352	4	H90	CELV	BOX	PLT	420
40553	5	H90	CELV	BOX	PLT	300
40328	2 ¾	HT AOH	CENLV	PIN	PLT	720
40327	2 ¾	HT AOH	CELV	BOX	PLT	960
40318	2 ¾	HT PAC	CENLV	PIN	PLT	1365
40330	2 ¾	HT PAC	CENLV	PIN	PLT	1176
40317	2 ¾	HT PAC	CELV	BOX	PLT	1680
40329	2 ¾	HT PAC	CELV	BOX	PLT	1430
40322	2 ¾	IF	CENLV	PIN	PLT	1515
40334	2 ¾	IF	CENLV	PIN	PLT	810
40347	3 ½	IF	CENLV	PIN	PLT	576
40357	4 ½	IF	CELV	PIN	PLT	336
40364	5 ½	IF	CENLV	PIN	PLT	120
40321	2 ¾	IF	CELV	BOX	PLT	2352
40331	2 ¾	IF	CELV	BOX	PLT	1485
40344	3 ½	IF	CELV	BOX	PLT	1080
40356	4 ½	IF	CELV	BOX	PLT	455
40564	5 ½	IF	CELV	BOX	PLT	180
40397	2 ¾	NC23	CENLV	PIN	PLT	1680
40322	2 ¾	NC26	CENLV	PIN	PLT	1515
40334	2 ¾	NC31	CENLV	PIN	PLT	810
40402	3 ½	NC35	CENLV	PIN	PLT	504
40347	3 ½	NC38	CENLV	PIN	PLT	576
40351	4	NC40	CENLV	PIN	PLT	392
40355	4	NC46	CENLV	PIN	PLT	392
40357	4 ½	NC50	CELV	PIN	PLT	336
40404	5 ½	NC56	CENLV	PIN	PLT	120
40396	2 ¾	NC23	CELV	BOX	PLT	2288
40321	2 ¾	NC26	CELV	BOX	PLT	2352
40331	2 ¾	NC31	CELV	BOX	PLT	1485
40401	3 ½	NC35	CELV	BOX	PLT	1080
40344	3 ½	NC38	CELV	BOX	PLT	1080
40350	4	NC40	CELV	BOX	PLT	560
40354	4	NC46	CELV	BOX	PLT	546
40356	4 ½	NC50	CELV	BOX	PLT	455

## Guardian Drill Pipe, API, Metal, Closed End

### Specifications

- **Material:** Pressed Steel
- **Color:** Silver/Gray

### Features

- Uncompromising, heavy duty protection of the entire thread form
- Provides protection even in the most extreme weather conditions
- Extra-heavy, steel construction
- Thread form and size permanently stamped on the part
- Easy installation and removal
- CNC precision cut thread
- Available in common API connections



Item No.	Item Size	Connection	Attributes	Pin/Box	Package Type	Package Qty.
40403	5 1/2	NC56	CELV	BOX	PLT	180
40710	2 3/8	OH	CENLV	PIN	PLT	1859
40336	2 7/8	OH	CENLV	PIN	PLT	1200
40711	2 3/8	OH	CELV	BOX	PLT	1859
40335	2 7/8	OH	CELV	BOX	PLT	1430
40324	2 3/8	PAC	CENLV	PIN	PLT	3315
40338	2 7/8	PAC	CENLV	PIN	PLT	2352
40323	2 3/8	PAC	CELV	BOX	PLT	3315
40337	2 7/8	PAC	CELV	BOX	PLT	2688
40326	2 3/8	REG	CENLV	PIN	PLT	1587
40341	2 7/8	REG	CENLV	PIN	PLT	891
40349	3 1/2	REG	CENLV	PIN	PLT	640
40361	4 1/2	REG	CENLV	PIN	PLT	336
40372	6 3/8	REG	CENLV	PIN	PLT	120
40325	2 3/8	REG	CELV	BOX	PLT	2145
40339	2 7/8	REG	CELV	BOX	PLT	1260
40348	3 1/2	REG	CELV	BOX	PLT	936
40359	4 1/2	REG	CELV	BOX	PLT	504
40370	6 3/8	REG	CELV	BOX	PLT	180
40700	3 1/2	XH	CENLV	PIN	PLT	648
40357	5	XH	CELV	PIN	PLT	336

Visit us online for even more information and articles on [drill pipe protection](#)



## Guardian Drill Pipe, Premium, Metal, Closed End

### Specifications

- **Material:** Pressed Steel
- **Color:** Silver/Gray

### Features

- Uncompromising, heavy-duty protection of the entire thread form
- Provides protection even in the most extreme weather conditions
- Extra-heavy, steel construction
- Thread form and size permanently stamped on the part
- Easy installation and removal
- CNC precision cut thread
- Available in common premium connections or premium drill pipe connections



Item No.	Item Size	Connection	Attributes	Pin/Box	Package Type	Package Qty.
40379	3 1/2	DS38	CENLV	PIN	PLT	576
40381	5	DS50	CENLV	PIN	PLT	294
40383	5 1/2	DS55	CENLV	PIN	PLT	180
40378	3 1/2	DS38	CELV	BOX	PLT	1080
40380	5	DS50	CELV	BOX	PLT	545
40382	5 1/2	DS55	CELV	BOX	PLT	270
40695	5	GPDS 50	CENLV	PIN	PLT	294
40046	6 5/8	GPDS 65	CENLV	PIN	PLT	122
40047	6 5/8	GPDS 65	CELV	BOX	PLT	245
40385	6 5/8	GTM69	CENLV	PIN	PLT	100
40384	6 5/8	GTM69	CELV	BOX	PLT	200
40389	3 1/2	HT38	CENLV	PIN	PLT	336
40391	4	HT40	CENLV	PIN	PLT	280
40393	5	HT50	CENLV	PIN	PLT	150
40395	5 1/2	HT55	CENLV	PIN	PLT	120
40563	6 5/8	HT90	CENLV	PIN	PLT	150
40388	3 1/2	HT38	CELV	BOX	PLT	504
40390	4	HT40	CELV	BOX	PLT	432
40392	5	HT50	CELV	BOX	PLT	240
40394	5 1/2	HT55	CELV	BOX	PLT	240
40697	6 5/8	HT90	CELV	BOX	PLT	300
40729	4	TT390	CENLV	PIN	PLT	343
40748	5 5/8	TT585	CENLV	PIN	PLT	294
40728	4	TT390	CELV	BOX	PLT	343
40749	5 5/8	TT585	CELV	BOX	PLT	294
40414	3 1/2	XT38	CENLV	PIN	PLT	392
40416	4	XT39	CENLV	PIN	PLT	441
40418	4 1/2	XT40	CENLV	PIN	PLT	392
40420	4 1/2	XT46	CENLV	PIN	PLT	168
40413	3 1/2	XT38	CELV	BOX	PLT	1040
40415	4	XT39	CELV	BOX	PLT	810
40417	4 1/2	XT40	CELV	BOX	PLT	672
40419	4 1/2	XT46	CELV	BOX	PLT	378
40542	5	XT50 XTM50	CENLV	PIN	PLT	120
40422	5 1/2	XT54 XTM54	CENLV	PIN	PLT	140
40424	5 1/2	XT55 XTM55	CENLV	PIN	PLT	140
40426	5 7/8	XT57 XTM57	CENLV	PIN	PLT	140
40439	6 5/8	XT69 XTM69	CENLV	PIN	PLT	80
40541	5	XT50 XTM50	CELV	BOX	PLT	240
40421	5 1/2	XT54 XTM54	CELV	BOX	PLT	240
40423	5 1/2	XT55 XTM55	CELV	BOX	PLT	240
40425	5 7/8	XT57 XTM57	CELV	BOX	PLT	245
40691	6 5/8	XT69 XTM69	CELV	BOX	PLT	140



# Guardian

## Guardian Drill Pipe, Premium, Metal, Closed End

### Specifications

- **Material:** Pressed Steel
- **Color:** Silver/Gray

### Features

- Uncompromising, heavy-duty protection of the entire thread form
- Provides protection even in the most extreme weather conditions
- Extra-heavy, steel construction
- Thread form and size permanently stamped on the part
- Easy installation and removal
- CNC precision cut thread
- Available in common premium connections or premium drill pipe connections



Item No.	Item Size	Connection	Attributes	Pin/Box	Package Type	Package Qty.
40432	3 ½	XTM38	CENLV	PIN	PLT	360
40434	4	XTM39	CENLV	PIN	PLT	280
40436	4 ½	XTM40	CENLV	PIN	PLT	280
40544	4 ½	XTM46	CENLV	PIN	PLT	168
40438	5 ¾	XTM57	CENLV	PIN	PLT	140
40431	3 ½	XTM38	CELV	BOX	PLT	567
40433	4	XTM39	CELV	BOX	PLT	560

## Utility Drill Pipe/HDD Protectors, Closed End

### Specifications

- **Material:** HDPE
- **Color:** Grey

### Features

- Available in liftable and non-liftable designs
- Light duty design
- Used to protect common utility drill pipe/HDD thread connections
- Protects from dirt, moisture, and corrosion
- Recommended for short term storage and in-yard transportation only
- 100% recyclable



Item No.	Item Size / Connection Name	Physical Attributes	Pin/Box	Package Type	Package Qty.
40167	1.660 MSI V	CENLV	PIN	CTN	600
40169	1.900 MSI V	CENLV	PIN	CTN	450
40172	2.063 MSI V	CENLV	PIN	CTN	128
40161	2 ¾ MSI V	CENLV	PIN	CTN	300
40163	2 ⅞ MSI V	CENLV	PIN	CTN	135
40165	3 ½ MSI V	CENLV	PIN	CTN	110
40168	1.660 MSI V	CELV	BOX	CTN	1200
40171	1.900 MSI V	CELV	BOX	CTN	700
40173	2.063 MSI V	CELV	BOX	CTN	650
40162	2 ¾ MSI V	CELV	BOX	CTN	300
40164	2 ⅞ MSI V	CELV	BOX	CTN	200
40166	3 ½ MSI V	CELV	BOX	CTN	110
40186	920 MSI DW	CENLV	PIN	CTN	800
40180	1720 MSI DW	CENLV	PIN	CTN	400
40178	2720 MSI DW	CENLV	PIN	CTN	350
40182	4020 MSI DW	CENLV	PIN	CTN	170
40184	7020 MSI DW	CENLV	PIN	CTN	75
40187	920 MSI DW	CELV	BOX	CTN	800
40181	1720 MSI DW	CELV	BOX	CTN	400

## Custom Thread Protection

---

### Custom Thread Protection, Heavy Duty

#### Specifications

- **Material:** Varies
- **Color:** Varies

#### Features

- Material capabilities include HDPE, LDPE, LLDPE, Nylon and Polypropolene
- Designed for extreme weather conditions; tested from -50°F to 150°F
- Designed by professionals with decades of experience in thread protection and plastic manufacturing
- Available in thick wall or thin wall designs
- Available in custom colors

#### Applications

- Perforating Guns
- Downhole Tools
- Drilling Components



## Ultra

---

### Ultra Extra Heavy Duty, Closed End

#### Specifications

- **Material:** HDPE
- **Color:** Varies

#### Features

- Recommended for long-term storage and extreme handling
- Designed for extreme weather conditions; tested from -50°F to 150°F
- API 5CT, Annex I, 10th edition compliant
- Optimal for premium thread connections
- Available in both liftable and non-liftable
- CNC cut for a precision fit
- 100% recyclable
- Available in custom colors

#### Applications

- Tubing: 2 3/8 in. - 4 1/2 in.
- Casing: 4 1/2 in. - 11 7/8 in.



## Ultra Premium Tubing, Heavy Duty, Closed End

### Specifications

- **Material:** HDPE
- **Color:** Red

### Features

- API 5CT, Annex I, 10th edition compliant
- Compatible with common premium tubing connections such as CS, PH6, RTS-6/8, and TS-HD/HP
- Recommended for long-term storage and extreme handling
- Designed for extreme weather conditions; tested from -50°F to 150°F
- Optimal for premium thread connections
- 100% recyclable



Item No.	Connection Size	Connection	Physical Attributes	Pin/Box	Package Type	Package Qty.
30109	2 3/8	6 Pitch	CENLV	PIN	PLT	1152
30111	2 7/8	6 Pitch	CENLV	PIN	PLT	800
30114	3 1/2	6 Pitch	CENLV	PIN	PLT	420
30855	4 1/2	6 Pitch	CENLV	PIN	PLT	294
30110	2 3/8	6 Pitch	CELV	BOX	PLT	1152
30113	2 7/8	6 Pitch	CELV	BOX	PLT	720
30116	3 1/2	6 Pitch	CELV	BOX	PLT	420
30856	4 1/2	6 Pitch	CELV	BOX	PLT	336
30355	1	8 Pitch	CENLV	PIN	CTN	240
30361	1 1/4	8 Pitch	CENLV	PIN	CTN	160
30104	1 1/2	8 Pitch	CENLV	PIN	CTN	220
30117	2 3/8	8 Pitch	CENLV	PIN	PLT	1260
30119	2 7/8	8 Pitch	CENLV	PIN	PLT	972
30129	3 1/2	8 Pitch	CENLV	PIN	PLT	648
30124	4 1/2	8 Pitch	CENLV	PIN	PLT	343
30358	1	8 Pitch	CELV	BOX	CTN	308
30854	1 1/4	8 Pitch	CELV	BOX	CTN	200
30107	1 1/2	8 Pitch	CELV	BOX	CTN	160
30118	2 3/8	8 Pitch	CELV	BOX	PLT	1287
30122	2 7/8	8 Pitch	CELV	BOX	PLT	960
30132	3 1/2	8 Pitch	CELV	BOX	PLT	640
30127	4 1/2	8 Pitch	CELV	BOX	PLT	336

## SealTite

### SealTite Perforating Gun Protectors

#### Specifications

- **Material:** HDPE
- **Color:** Black

#### Features

- Recommended for moisture prevention on charges
- Complete coverage of threaded area
- Optional O-rings
- Most styles accommodate installation equipment
- Designed in-house

\* SealTite is comprised largely of proprietary threads. Stock is available only on non-proprietary threads.



## Sucker Rod Protectors

### Sucker Rod Protectors

#### Specifications

- **Material:** HDPE
- **Color:** Black

#### Features Caps

- Excellent impact protection
- Crack prevention
- Secure fit due to wide internal ribs
- Full coverage of threaded area
- Compatible with specialized tools on 12-point socket tools for removal

#### Features Plug

- Coupling thread protection
- Keeps coupling free of debris and foreign objects



Item No.	Rod Size (in.)	Cap/Plug	Package Type	Package Qty.
81498	5/8	Cap	CTN	600
81497	3/4	Cap	CTN	400
81496	7/8	Cap	CTN	500
81495	1	Cap	CTN	300
81499	1 1/8	Cap	CTN	200
81505	5/8	Plug	CTN	3500
81506	3/4	Plug	CTN	2500
81507	7/8	Plug	CTN	2000
81508	1	Plug	CTN	1500

LinePro Line Pipe Cap, Closed End

**Specifications**

- **Material:** LDPE
- **Color:** Green

**Features**

- Available in liftable and non-liftable designs
- Available for plain and beveled ends
- Easy to install and remove
- 100% recyclable
- Available in custom colors; additional fees may apply



Item No.	Line Pipe Size	Wall Thickness (mm)	Wall Thickness (in)	Physical Attributes	Package Type	Package Qty.
55135	2 3/8	3.0	0.118	CENLV	PLT	4,096
55131	2 7/8	3.0	0.118	CENLV	PLT	1,960
55129	3 1/2	3.5	0.138	CENLV	PLT	720
55121	4 1/2	3.5	0.138	CENLV	PLT	936
55120	5	4.0	0.157	CENLV	PLT	448
55119	5 1/8	5.5	0.217	CENLV	PLT	448
55118	5 3/8	2.5	0.098	CENLV	PLT	448
55116	5 9/16	5.0	0.197	CELV	PLT	392
55117	5 9/16	5.0	0.197	CENLV	PLT	392
55110	6 3/8	4.0	0.157	CENLV	PLT	287
55112	6 3/8	17.0	0.669	CELV	PLT	287
55111	6 3/8	26.5	1.043	CELV	PLT	287
55114	6 1/2	5.5	0.217	CENLV	PLT	287
55113	6 3/4	4.0	0.157	CENLV	PLT	287
55106	8 3/8	4.0	0.157	CENLV	PLT	225
55108	8 3/8	25.4	1.000	CELV	PLT	225
55181	9 3/8	4.5	0.177	CENLV	PLT	96
55166	10 3/4	5.0	0.197	CENLV	PLT	96
55167	10 3/4	38.5	1.516	CELV	PLT	144
55164	11	25.0	0.984	CELV	PLT	128
55161	11 3/4	5.0	0.197	CENLV	PLT	72
55160	12 1/4	26.0	1.024	CELV	PLT	96
55157	12 3/4	5.0	0.197	CENLV	PLT	72
55159	12 3/4	25.4	1.000	CELV	PLT	72
55155	12 3/4	45.0	1.772	CELV	PLT	72
55158	12 3/4	45.0	1.772	CELV	PLT	72
55154	13 3/8	5.0	0.197	CENLV	PLT	90
55152	14	5.0	0.197	CENLV	PLT	72
55153	14	25.4	1.000	CELV	PLT	72
55151	14	35.0	1.378	CELV	PLT	72

**Lifting Bails**

**Specifications**

- **Material:** Steel
- **Color:** Orange

**Features**

- Specialty paint finish for longer lasting color
- High visibility orange color
- Manufactured to 3x safe working load (SWL)
- Size and connection stamped on each bail
- Serial number stamped on each bail for traceability
- Material test certificate provided with each bail



Item No.	Connection Size	Connection	Pin/Box
81455	4	FH	PIN
81457	5 ½	FH	PIN
81459	6 ¾	FH	PIN
81456	4	FH	BOX
81458	5 ½	FH	BOX
81460	6 ¾	FH	BOX
81420	3 ½	IF	PIN
81447	4	IF	PIN
81424	4 ½	IF	PIN
81421	3 ½	IF	BOX
81448	4	IF	BOX
81425	4 ½	IF	BOX
81422	4 ½	REG	PIN
81426	6 ¾	REG	PIN
81428	7 ¾	REG	PIN
81453	8 ¾	REG	PIN
81423	4 ½	REG	BOX

Due to the rough work environment in which cast steel thread protectors with lifting bails are handled, MSI Pipe Protection Technologies strongly recommends that the end users carry out thorough inspection of the product before each use to ensure that the bail is intact, threads are not damaged, and that proper sealing/thread engagement is present prior to any lifting.

# SpiraGuard Bumper Rings

Separate pipe during transportation, handling, and storage to avoid outer surface contact between multiple pipes



**Flexible and durable | Easy to install | Custom colors available | Page 44**

# Roughneck

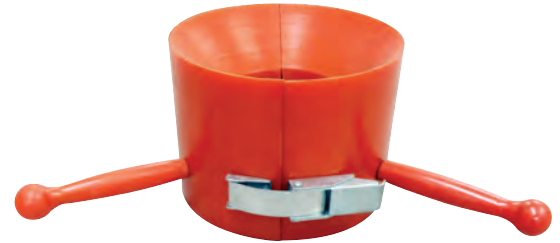
## Roughneck Stabbing Guide, Standard Duty, Buckle Closure

### Specifications

- **Material:** Urethane, Steel Components
- **Color:** Refer to Chart

### Features

- Prevents damage to pipe threads during make-up
- Steel core with urethane outer shell
- Removable and replaceable handles
- Buckle closure
- Available for tubing, casing, and drill pipe connections
- Available in custom colors; additional fees may apply



Item No.	Item Size	lbs/ft.	Connection	Coupling/ Tool Joint	Color	Interchangeable Connection
80532	3 1/2	-	BTC	4.313	ORANGE	-
80535	4 1/2	-	BTC	5.000	ORANGE	-
80533	5 1/2	-	BTC	6.050	ORANGE	-
80534	7	-	BTC	7.656	ORANGE	-
80537	9 5/8	-	BTC	10.625	ORANGE	-
80538	10 3/4	-	BTC	11.750	ORANGE	-
80536	13 3/8	-	BTC	14.375	ORANGE	-
80930	20	-	BTC	21.000	ORANGE	-
80842	1	-	CS	1.600	ORANGE	-
80448	1 1/4	-	CS	1.927	ORANGE	-
80449	1 1/2	-	CS	2.162	ORANGE	-
80894	1 1/2	-	CS	2.179	BLUE	-
80890	1 1/2	-	CS	2.179	ORANGE	-
80843	2 1/16	-	CS	2.460	ORANGE	-
80749	2 3/8	-	CS	2.700	ORANGE	-
80891	2 3/8	-	CS	2.750	ORANGE	-
80895	2 3/8	-	CS	2.750	BLUE	-
80371	2 7/8	-	CS	3.201	ORANGE	-
80877	2 7/8	6.5	CS	3.210	ORANGE	-
80775	3 1/4	9.3	CS	3.905	ORANGE	-
80715	5	-	DS50	6.625	ORANGE	-
80710	5 1/2	-	DS55	7.000	ORANGE	-
80719	6 5/8	-	DS65	8.400	ORANGE	-
80705	2 3/8	-	EUE	3.060	ORANGE	-
80917	2 3/8	-	EUE	3.063	ORANGE	-
80832	2 3/8	-	EUE	3.078	ORANGE	-
80716	2 3/8	-	EUE	3.080	ORANGE	-
80823	2 7/8	-	EUE	3.125	ORANGE	-
80826	2 7/8	-	EUE	3.480	ORANGE	-
80869	2 7/8	-	EUE	3.460	BLUE	-
80717	2 7/8	-	EUE	3.500	ORANGE	-
80872	2 7/8	6.5	EUE	3.670	ORANGE	-
80967	2 7/8	-	EUE	3.670	ORANGE	-
80788	2 7/8	-	EUE	3.668	ORANGE	-
81046	3 1/2	9.3	EUE	4.180	BLUE	-
80968	3 1/2	-	EUE	4.500	ORANGE	-
80333	4 1/2	-	EUE	5.000	ORANGE	-
80969	4 1/2	-	EUE	5.560	ORANGE	-
80313	4	-	FH	5.250	ORANGE	-
80339	4	-	FH	5.500	ORANGE	-
80675	4	-	FH	5.375	ORANGE	-
80212	4	-	FH	6.250	ORANGE	-
80745	4 1/2	-	FH	6.250	ORANGE	-
80391	5	-	FH	5.250	ORANGE	-
80735	5 1/2	-	FH	6.625	ORANGE	-
80602	5 1/2	-	FH	7.000	ORANGE	-
80408	5 1/2	-	FH	7.250	ORANGE	-
80966	6 5/8	-	FH	8.000	ORANGE	-
80789	6 5/8	-	FH	8.250	ORANGE	-
80505	6 5/8	-	FH	8.500	ORANGE	-
80874	5	-	GPDS50	6.625	ORANGE	-
80409	5 1/2	-	HT55	7.250	ORANGE	-
80750	5 1/2	-	HT55	7.000	ORANGE	-
81388	2 7/8	-	HTPAC	3.125	ORANGE	-
80573	3 1/2	-	IF	4.500	ORANGE	-
80299	3 1/2	-	IF	4.750	ORANGE	-

# Roughneck

## Roughneck Stabbing Guide, Standard Duty, Buckle Closure

### Specifications

- **Material:** Urethane, Steel Components
- **Color:** Refer to Chart

### Features

- Prevents damage to pipe threads during make-up
- Steel core with urethane outer shell
- Removable and replaceable handles
- Buckle closure
- Available for tubing, casing, and drill pipe connections
- Available in custom colors; additional fees may apply



Item No.	Item Size	lbs/ft.	Connection	Coupling/ Tool Joint	Color	Interchangeable Connection
80706	3 1/2	-	IF	4.875	ORANGE	-
80696	3 1/2	-	IF	5.000	ORANGE	-
80698	4 1/2	-	IF	6.250	ORANGE	NC50, 5 XH
80305	4 1/2	-	IF	6.375	ORANGE	NC50, 5 XH
80311	4 1/2	-	IF	6.500	ORANGE	NC50, 5 XH
80307	4 1/2	-	IF	6.625	ORANGE	NC50, 5 XH
81089	4 1/2	-	IF	6.625	BLUE	NC50, 5 XH
80781	4 1/2	-	IF	6.750	ORANGE	NC50, 5 XH
80332	4 1/2	-	IF	6.875	ORANGE	NC50, 5 XH
80767	4 1/2	-	LTC	5.000	ORANGE	-
81181	5 1/2	-	LTC	6.050	ORANGE	-
80893	5 1/2	-	LTC	6.111	BLUE	-
81066	7	-	LTC	7.625	ORANGE	-
80870	7	-	LTC	7.656	BLUE	-
80916	9 3/8	-	LTC	10.625	ORANGE	-
80670	2 3/8	5.95	PH6	2.905	ORANGE	-
80844	2 3/8	-	PH6	2.906	RED	-
80896	2 3/8	-	PH6	2.906	BLUE	-
80810	2 3/8	-	PH6	2.906	ORANGE	-
80834	2 7/8	-	PH6	3.438	ORANGE	-
80897	2 7/8	-	PH6	3.438	BLUE	-
80774	2 7/8	8.7	PH6	3.500	ORANGE	-
80835	2 7/8	-	PH6	3.500	ORANGE	-
80776	3 1/2	12.95	PH6	4.313	ORANGE	-
80761	4 1/2	-	REG	6.500	ORANGE	-
81150	6 3/8	-	REG	8.000	ORANGE	-
80506	6 3/8	-	REG	8.250	ORANGE	-
81155	3 1/2	9.2	TSH 511	3.500	GREEN	-
80920	3 1/2	9.2 - 12.7	TSH 563	4.250	GREEN	-
80921	4 1/2	11.6 - 13.5	TSH 563	5.200	GREEN	-
80909	6 3/8	24	TSH 521	7.390	ORANGE	-
80937	7	26	TSH 563	7.656	GREEN	-
80922	7 3/8	26.4 - 33.7	TSH 563	8.500	GREEN	-
80923	9 3/8	36 - 53.5	TSH 563	10.625	GREEN	-
80936	9 3/8	40	TSH 521	9.957	GREEN	-
80908	9 3/8	53.5	TSH 563	10.625	ORANGE	-
80919	13 3/8	54.5 - 72	TSH 563	14.375	GREEN	-
80924	10 3/4	45.5 - 51	TSH 563	11.750	GREEN	-
80778	4	-	TT390	4.875	ORANGE	-
80779	5 7/8	-	TT585	7.000	ORANGE	-
80515	4 1/2	-	XH	6.000	ORANGE	-
80286	4 1/2	-	XH	6.250	ORANGE	-
80306	4 1/2	-	XH	6.500	ORANGE	-
80787	5 1/2	-	XH	6.625	ORANGE	-
80672	3 1/2	-	XT38	4.750	ORANGE	-
80221	4	-	XT39	4.875	ORANGE	-
80676	4	-	XT39	5.000	ORANGE	-
80783	4	-	XT39	5.000	BLACK	-
80503	4	-	XT39	6.250	ORANGE	-
80609	4	-	XT50	6.500	ORANGE	-
80518	5 1/2	-	XT54	6.625	ORANGE	-
80517	5 1/2	-	XT54	6.750	ORANGE	-
80901	5 7/8	-	XT57	6.750	ORANGE	-
80500	5 7/8	-	XT57	7.000	ORANGE	-
80782	5 7/8	-	XT57	7.250	ORANGE	-



# Roughneck

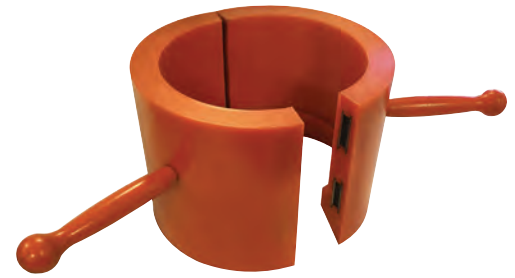
## Roughneck Stabbing Guide, Standard Duty, Magnetic Latch Closure

### Specifications

- **Material:** Urethane, Steel Components
- **Color:** Refer to Chart

### Features

- Prevents damage to pipe threads during make-up
- Steel core with urethane outer shell
- Removable and replaceable handles
- Magnetic closure; double magnetic closure also offered
- Available for tubing, casing, and drill pipe connections
- Available in custom colors; additional fees may apply



Item No.	Item Size	lbs/ft.	Connection	Coupling/ Tool Joint OD	Color	Interchangeable Connection
81111	5 ½	-	BTC	6.050	ORANGE	-
80955	4 ½	-	CDC-HTQ	5.300	BLUE	-
80852	5 ½	-	CDC-HTQ	6.300	ORANGE	-
80954	7	-	CDC-HTQ	7.900	BLUE	-
80838	4	-	CET39	4.875	MAROON	-
81407	4	-	CET43	5.375	ORANGE	-
81432	5	-	CET50	6.625	MAROON	-
81403	5 ½	-	CET54	6.625	MAROON	-
81434	5 ⅞	-	CET57	7.000	MAROON	-
81071	1 ½	3.64	CS	2.162	ORANGE	-
81433	1 ½	4.19	CS	2.179	ORANGE	-
81175	2 ¾	-	CS	2.700	ORANGE	-
81272	2 ¾	6.5	CS	3.210	ORANGE	-
81405	2 ¾	-	CS	3.220	ORANGE	-
81273	3 ½	9.3	CS	3.915	ORANGE	-
81379	2 ¾	-	EUE	2.910	ORANGE	-
81218	2 ¾	-	EUE	3.060	ORANGE	-
81380	2 ¾	-	EUE	3.460	ORANGE	-
81318	2 ¾	-	EUE	3.668	ORANGE	-
81381	3 ½	-	EUE	4.180	ORANGE	-
81149	4	-	FH	5.250	ORANGE	-
81070	5 ½	-	HT55	7.000	ORANGE	-
81042	4	-	IF	6.500	MAROON	NC46, 4 ½ XH
80871	4 ½	-	IF	6.625	ORANGE	NC50, 5 XH
81072	2 ⅞	-	IJ 10 RD	2.315	ORANGE	-
81274	2 ¾	5.95	PH6	2.906	ORANGE	-
81430	2 ¾	-	PH6	3.302	ORANGE	-
81171	2 ¾	7.9	PH6	3.438	ORANGE	-
81437	2 ¾	8.7	PH6	3.500	ORANGE	-
81172	3 ½	12.95	PH6	4.313	ORANGE	-
81151	6 ¾	-	REG	8.000	ORANGE	-
81057	4 ½	-	STC	5.000	ORANGE	-
81055	5	-	STC	5.563	ORANGE	-
81056	5 ½	-	STC	6.050	ORANGE	-
81153	2 ¾	4.6	TSH 511	2.406	GREEN	-
81154	2 ¾	6.4	TSH 511	2.875	GREEN	-
81219	4	11	TSH 511	4.000	ORANGE	-
80939	5 ½	15.5	TSH 511	5.535	GREEN	-
80935	4 ½	12.6 - 13.5	TSH 521	4.759	GREEN	-
80938	5 ½	17	TSH 521	5.761	GREEN	-
80940	3 ½	9.2 - 12.7	TSH 563	4.250	GREEN	-

# Roughneck

## Roughneck Stabbing Guide, Heavy Duty, Quick-Lock Bolt Closure

### Specifications

- **Material:** Polyurethane, Steel Components
- **Color:** Black

### Features

- Prevents damage to pipe threads during make-up
- Thick steel core with polyurethane outer shell
- Removable and replaceable handles
- Large, quick-lock bolt closure for maximum durability
- Available for tubing, casing, and drill pipe connections
- Ideal for offshore applications



Item No.	Item Size	Connection	Coupling/Tool Joint OD	Interchangeable Connection
80587	7	BTC	7.656	-
80588	9 5/8	BTC	10.625	-
80589	13 3/8	BTC	14.375	-
80712	5	DS50	6.625	-
80711	5 1/2	DS55	7.000	-
81228	5 1/2	DS55	7.125	-
81229	6 5/8	DS65	8.125	-
81298	6 5/8	DS65	8.375	-
80769	4	FH	5.250	-
80770	4	FH	5.500	-
80295	5 1/2	FH	7.2500	-
80527	5 1/2	FH	7.500	-
80603	5 1/2	FH	7.000	-
80699	6 5/8	FH	8.000	-
80689	6 5/8	FH	8.250	-
80281	6 5/8	FH	8.500	-
81230	6 5/8	FH	8.688	-
80730	5	GPDS	6.625	-
80728	6 5/8	GPDS	8.500	-
80729	5 7/8	GPDS	7.000	-
80600	5 1/2	GPDS50	6.625	-
80601	5 1/2	GPDS55	7.250	-
81311	5	HT50	6.625	-
80550	5 1/2	HT55	7.000	-
81048	5 1/2	HT55	7.125	-
81246	5 1/2	HT55	7.250	-
80702	2 7/8	HTPAC	3.125	-
80688	2 3/8	HTPAC	3.375	-
80701	2 7/8	HTPAC	3.500	-
81047	2 3/8	IF	3.375	-
80572	3 1/2	IF	4.500	-
80570	3 1/2	IF	4.750	-
81038	3 1/2	IF	4.875	-
81037	3 1/2	IF	4.9375	-
80571	3 1/2	IF	5.000	-
80370	4	IF	6.250	NC46, 4 1/2 XH
80377	4 1/2	IF	6.375	NC50, 5 XH
80539	4 1/2	IF	6.500	NC50, 5 XH
80348	4 1/2	IF	6.625	NC50, 5XH
80700	4 1/2	IF	6.750	NC50, 5 XH

# Roughneck

## Roughneck Stabbing Guide, Heavy Duty, Quick-Lock Bolt Closure

### Specifications

- **Material:** Polyurethane, Steel Components
- **Color:** Black

### Features

- Prevents damage to pipe threads during make-up
- Thick steel core with polyurethane outer shell
- Removable and replaceable handles
- Large, quick-lock bolt closure for maximum durability
- Available for tubing, casing, and drill pipe connections
- Ideal for offshore applications



Item No.	Item Size	Connection	Coupling/Tool Joint OD	Interchangeable Connection
80855	7	LTC	7.6875-	-
80531	2 3/8	PH6	2.908	-
80369	2 7/8	PH6	3.438	-
80530	2 7/8	PH6	3.500	-
80585	6 5/8	REG	8.000	-
80586	7 5/8	REG	9.500	-
81358	4	SLHT	4.500	-
80556	4 1/2	TM250	6.625	-
80584	5 1/2	TSDS50	6.625	-
81245	5 7/8	TT585	7.000	-
80854	4 1/2	XH	5.500	-
80459	4 1/2	XH	6.500	-
81201	3 1/2	XT38	4.750	-
80526	4	XT39	4.875	-
81322	4	XT39	5.500	-
80881	5	XT50	6.625	-
80898	5 1/2	XT54	6.625	-
80288	5 7/8	XT57	7.000	-
81222	5 7/8	XT57	7.250	-



**RHINO**  
TUBULAR  
HANDLING SYSTEMS™



Withstands the toughest handling conditions | UK rental options available | page 46

## Accessories

### SpiraGuard Bumper Rings

#### Specifications

- **Material:** Polyethylene
- **Color:** Black

#### Features

- Used to separate pipe during transportation, handling, and storage
- Helps avoid outer surface contact between multiple tubulars
- Flexible and durable
- Easy to install and remove
- 100% recyclable
- Available in custom colors; additional fees may apply



Item No.	Item Size	Material Height (in.)	Package Type	Package Qty.
81441	2 3/8	0.430	CTN	200
81259	2 7/8	0.430	CTN	190
81260	3 1/2	1.000	CTN	185
81263	4	1.000	CTN	170
81264	4 1/2	1.000	CTN	170
81261	5	1.000	CTN	145
81262	5 1/2	1.000	CTN	135
81265	6 3/8	1.000	CTN	100
81266	7	1.000	CTN	96
81252	7 3/8	1.000	CTN	80
81442	8 3/8	1.000	PLT	528
81253	9 3/8	1.000	PLT	297
81267	10	1.000	PLT	297
81254	11 3/4	1.000	PLT	297
81255	13 3/8	1.000	PLT	231
81257	14	1.000	PLT	132
81256	16	1.000	PLT	132
81258	18	1.000	PLT	132
81438	20	1.000	PLT	132
81439	24	2.090	PLT	20



### Pipe Chocks

#### Specifications

- **Material:** Refer to Chart
- **Color:** Refer to Chart

#### Features

- Used to help secure pipe to a truck during transit
- Certain styles include nails
- Available in high visibility colors
- Certain styles available in custom colors; additional fees may apply

Item No.	Dimensions	Color	Including Nails	Material	Package Type	Package Qty.
80875	4 1/2 x 2 x 2	Orange	Yes	LDPE	CTN	50
70101	5 x 2 x 2	Red	No	HDPE	CTN	135
70782	5 x 2 x 2	Blue	No	HDPE	CTN	135
80350	8 X 3 X 3 1/2	Orange	No	HDPE	CTN	40
81043	8 X 3 1/2 X 3	Orange	Yes	HDPE	CTN	20

## Accessories

### ToughTORQ Installation Tools

#### Specifications

- **Material:** Steel
- **Color:** Black

#### Features

- Recommended for automated operations
- Eliminates manual installation
- Customizable to impact wrench size
- Customizable to MSI product designs
- Multiple design styles to accommodate MSI thread protectors
- Designed in-house

#### Applications

- Tubing: 2 3/8" - 4 1/2"
- Casing: 4 1/2" - 13 3/8"



\*Installation tools are made to order and are considered a non-stocked item



As a leading oilfield service company for over 80 years, Tuboscope continues to raise the global standard with a comprehensive and integrated suite of value added solutions for all your drilling, production and line pipe needs. With a worldwide infrastructure second to none, we offer the newest generation technologies and services that maximize the lifecycle of your assets, help you drill safer and more efficiently, increase production and reduce downtime.

Tuboscope has built its reputation on being innovative, safety conscious and service minded. Our team of experts will continue to lead the way by offering a targeted package of services that consistently optimize your investment.

**NDT Inspection Services**

**TK™ Corrosion Control**

**Machining Services**

**TCS™ Hardbanding**

**Artificial Lift Technologies**

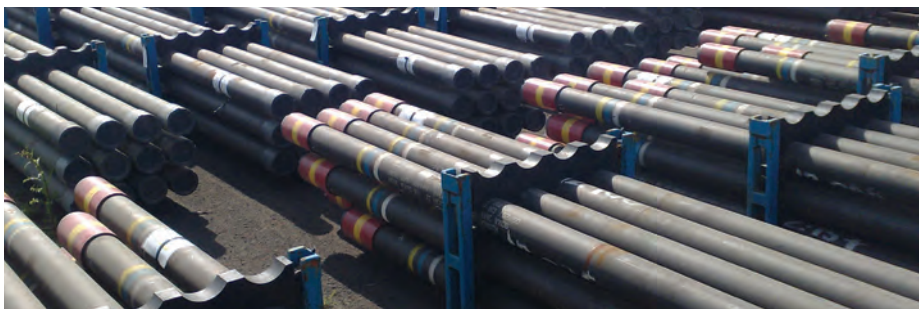
**Line Pipe Connection Systems**

**Specialty Inspection Services (SIS)**

**Asset & Inventory Management**

**MSI Pipe Protection Technologies**

## Rhino Tubular Handling Systems



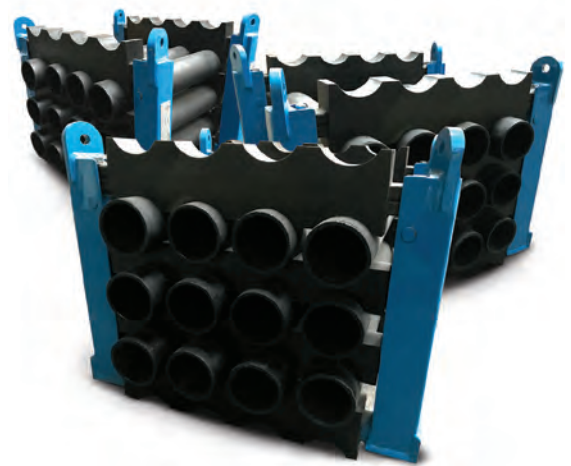
Our Rhino Tubular Handling Systems have provided a safe, efficient, cost-effective method of transporting tubular products, offshore and onshore for over 40 years. To this day, Rhino is still the preferred system for preventing damage to expensive chrome-alloy tubulars. Frames are available for a variety of pipe sizes, are load tested, certified and DNV approved.

### Specifications

- **Material:** HDPE and Steel
- **Color:** Blue/Black

### Features

- DNVGL-ST-0378/BS EN 12079 type approval
- Stackable system
- Ability to inspect and drift pipe in frames
- Save rig time and money with pre-tally onshore
- Over-engineered strength built into frames for added safety
- Easy to pre-tally and number frames/pipe onshore for running order offshore
- Ability to break down frames after pipe run frees up valuable space on rig floor
- Broken down frames offload approximately 20+ sets of frames in one half height
- Safe and easy system for yard staff to load, saving time with minimum effort
- Full training back-up available for loading pipe into frames
- Frames are manufactured to individual sizes of pipe for complete protection in transport
- 12 tonne lift
- Scalloped molds to prevent metal to metal contact
- Field proven for 40 years of service in the North Sea
- Collapsible system for space saving offshore
- Frames can be returned in a half height



# No matter where you are, we can help you deliver

We bring you the best in pipe protection, services, and innovation.



Contact us today for orders, free samples, no-obligation quotes or information about our products:

## Global Headquarters – US

9035 Solon Road  
Houston, Texas, USA 77064

**S** 877 276 9208

**M** 281 890 4595

**E** [tuboscopemsisales@nov.com](mailto:tuboscopemsisales@nov.com)

## Mailing Address

P.O. Box 691088  
Houston, TX 77269

## Mexico

Avenida Framboyanes Lote 1, Manzana 4  
Ciudad Industrial Bruno Pagliai  
Veracruz, Veracruz 91697

**T** 011 52 229 989 6731

**F** 011 52 229 981 1839

## Canada

#101,6704 – 41 Street  
Leduc, Alberta, Canada  
T9E-0Z4

**T** 780 612 1123

**F** 780 612 9923

## United Kingdom

24 Howe Moss Drive,  
Dyce, Aberdeen  
AB21 OGL

**T** 011 44 1224 708011

**F** 011 44 1224 708022

**E** [WT-GBR-MSIPipeProtection@nov.com](mailto:WT-GBR-MSIPipeProtection@nov.com)

---

National Oilwell Varco has produced this brochure for general information only, and it is not intended for design purposes. Although every effort has been made to maintain the accuracy and reliability of its contents, National Oilwell Varco in no way assumes responsibility for liability for any loss, damage or injury resulting from the use of information and data herein. All applications for the material described are at the user's risk and are the user's responsibility.

**Tuboscope Headquarters**

2835 Holmes Road  
Houston, Texas 77051  
United States  
Phone: 346 223 6100

**MSI PPT Headquarters**

9035 Solon Road  
Houston, Texas 77064  
United States  
Phone: 281 890 0543

© 2020 National Oilwell Varco | All Rights Reserved  
TC D392006521-02 | JIRA 10612

ISO 9001: 2015  
ISO 14001: 2015  
OHSAS 18001: 2007